



Plug-In Voice Security for Kenwood Radios

TVS-2-KWx

High-Level Hopping Code Voice Scrambler

- 5 User-Programmable Levels of Security
- Uses Hopping Code Instead of Sweeping Code for Higher Security
- +40 Trillion Possible Codes
- Supports Over-The-Air-Reprogramming (OTAR), Radio Kill, Spy and more using Midian's Kryptic Signaling Format

VPU-15-KWx

Voice Inversion Scrambler with Kryptic Signaling

- 4 User-Programmable Inversion Frequencies from a List of 37 Frequencies
- Supports Over-The-Air-Reprogramming (OTAR), Radio Kill, Spy and more using Midian's Kryptic Signaling Format

VS-110-KWx

Rolling Double Inversion Voice Scrambler

- Programmable to up to 4 of 1020 codes (4 groups with 255 codes per group)
- Compatible with Icom's UT-110

VS-1000-KWx

Voice Inversion Scrambler

- Programmable to any Inversion Frequency between 2100 and 4096 Hz

VS-1050-KWx

Voice Inversion Scrambler with ANI

- Programmable to any Inversion Frequency between 2100 and 4096 Hz
- ANI and ENI in Motorola's MDC-1200, Kenwood's FleetSync, Harris' G-Star (aka GE-Star), DTMF or 5-Tone

VS-1100-KWx

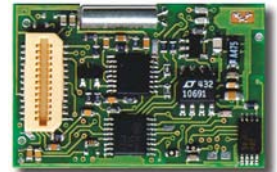
Double Inversion Voice Scrambler

- Programmable to up to 4 of any of the 32 splits
- Compatible with Midian's VPU-6, Icom's UT-109 or Inysa's XPTO

VS-1200-KWx

High Level Frequency Domain Voice Scrambler with ANI

- Total code combinations: $\sim 6.2 \times 10^{23}$
- Actual code combinations: ~ 4 billion
- Number of selectable keys: 3
- 3 user-programmable levels of security plus voice inversion
- Programmable audio levels
- ANI and ENI in Motorola's MDC-1200, Kenwood's FleetSync, Harris' G-Star (aka GE-Star), DTMF or 5-Tone



Shown: TVS-2-KW1



Shown: VS-1000-KW2



Shown: VS-1200-KW3



Plug-In Tone & Voice Modules for Kenwood Radios

ANI-F-KW1

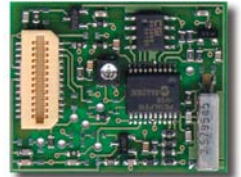
Multi-Format ANI & Emergency ANI Encoder

- ANI and ENI in Motorola's MDC-1200, Kenwood's FleetSync, Harris' G-Star (aka GE-Star), DTMF or 5-Tone

SVR-1-KWx

Simplex Repeater Maker

- Store and forward up to 3 minutes of tone and voice
- Create a low-cost simplex vehicular repeater to increase portable radio coverage when the user is out of his or her vehicle
- Expand radio coverage into remote locations, tunnels, buildings, downtown areas & more



Shown: ANI-F-KW1

TS-120-KWx

Multi-Format ANI & Emergency ANI Encoder

- ANI and ENI in Motorola's MDC-1200, Kenwood's FleetSync, Harris' G-Star (aka GE-Star), DTMF or 5-Tone
- Lone Worker feature
- Man-Down feature using an accelerometer

VAE-1-KWx

Voice Alarm Encoder with Multi-Format ANI

- Prerecord voice messages to be sent when an event occurs
- Lone Worker feature
- Man-Down feature using an accelerometer
- Ideal for notifying of a user's location, equipment failure or when on backup power
- ANI and ENI in Motorola's MDC-1200, Kenwood's FleetSync, Harris' G-Star (aka GE-Star), DTMF or 5-Tone



Shown: SVR-1-KW2

The modules in this brochure are supported in the Kenwood radios listed below.

Note: The TVS-2 and VPU-15 series are only available as a KW1 and KW2.

KW1 Series: TK-2180, TK-3180, TK-5210, TK-5710, TK-7180, TK-8180

KW2 Series: TK-2170, TK-3170

KW3 Series: NX-200, NX-300, NX-700, NX-800